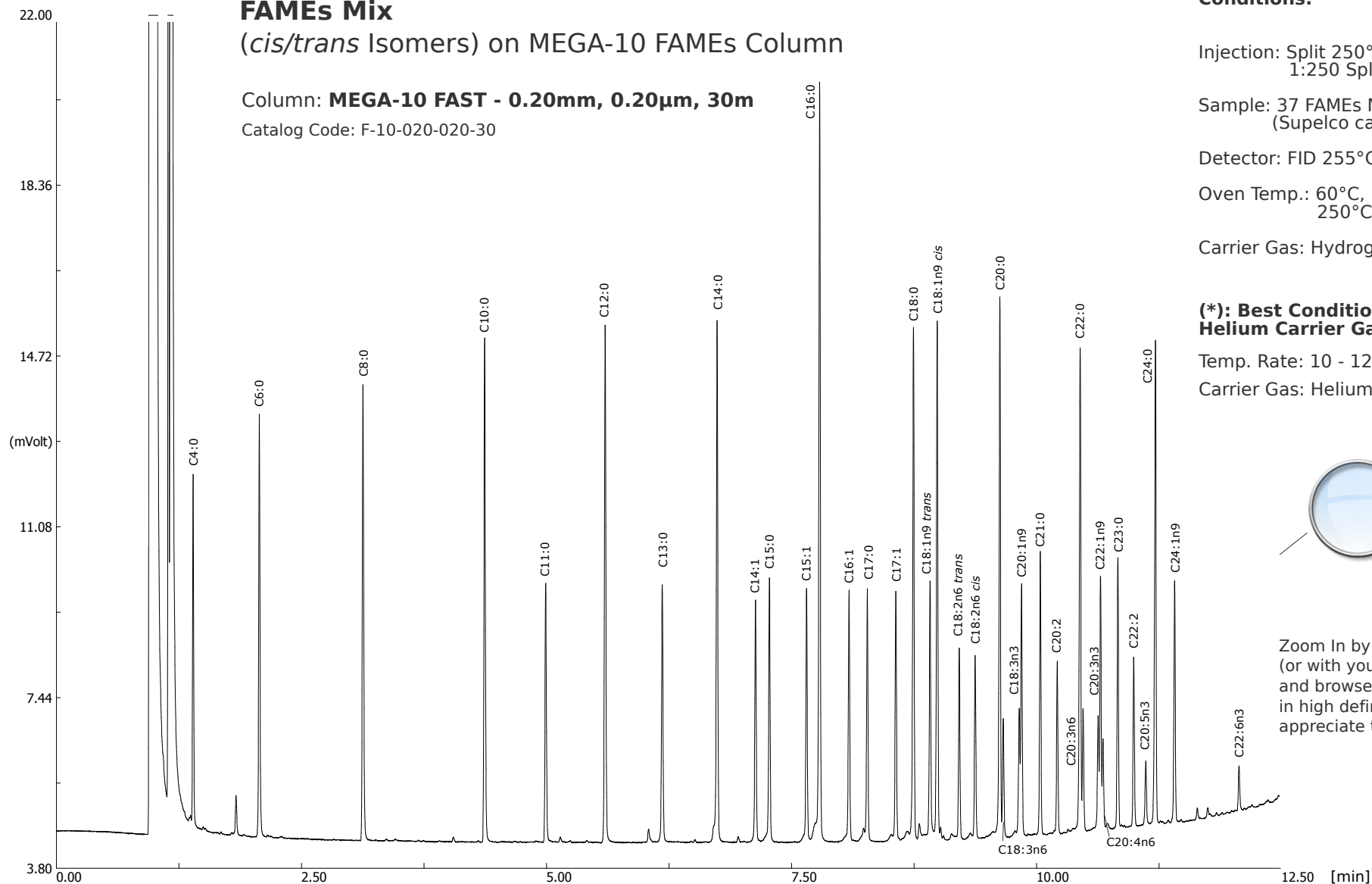


FAMES Mix
 (*cis/trans* Isomers) on MEGA-10 FAMES Column

Column: **MEGA-10 FAST - 0.20mm, 0.20µm, 30m**
 Catalog Code: F-10-020-020-30



Conditions:

Injection: Split 250°C, 0.5µL,
 1:250 Split Ratio.

Sample: 37 FAMES Mix
 (Supelco cat. #: 47885-U).

Detector: FID 255°C.

Oven Temp.: 60°C, 15°C/min,
 250°C (*).

Carrier Gas: Hydrogen, 150 kPa (*).

(*) Best Conditions with Helium Carrier Gas:

Temp. Rate: 10 - 12°C/min.

Carrier Gas: Helium, 180 - 200 kPa.



Zoom In by clicking here
 (or with your Pdf viewer zoom)
 and browse the chromatogram
 in high definition to better
 appreciate the separation!

