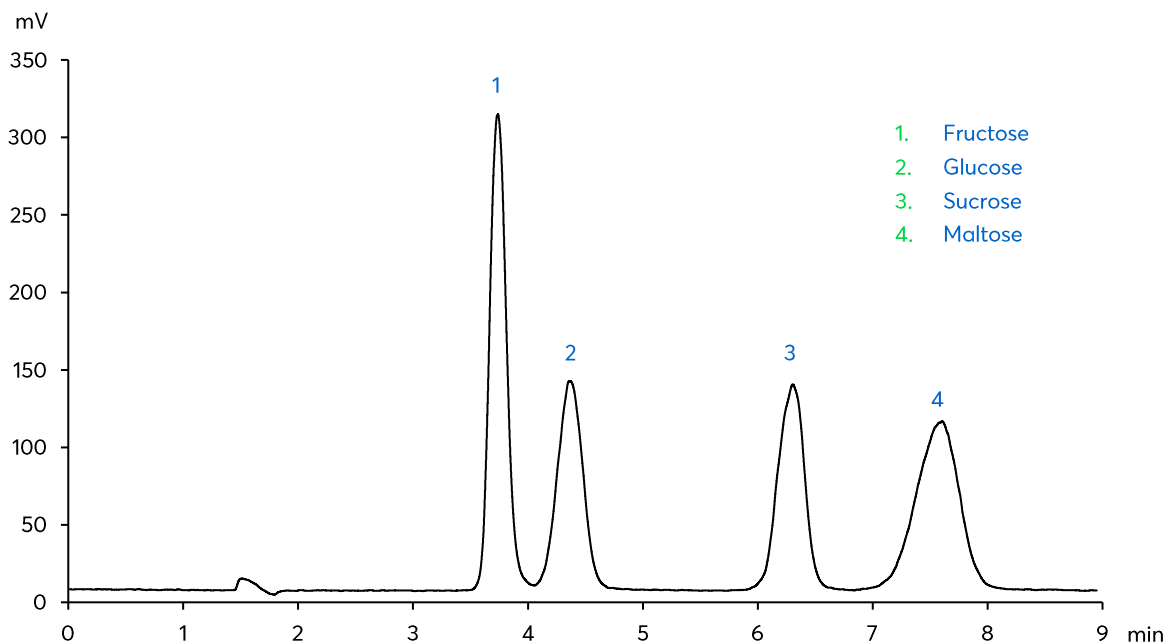
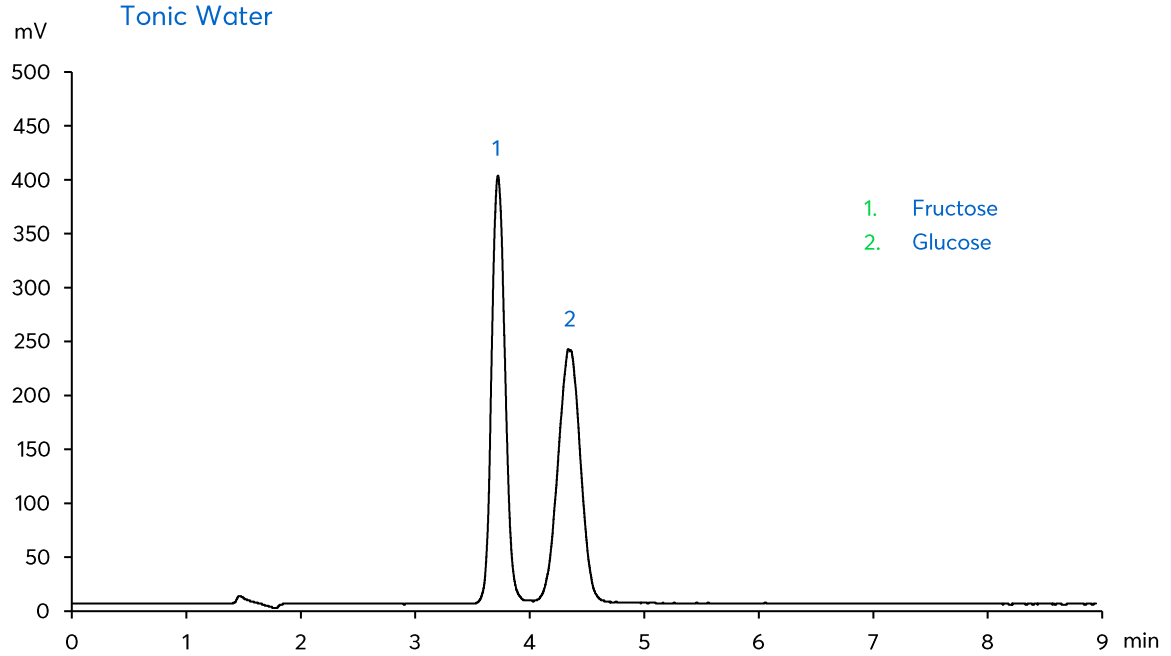
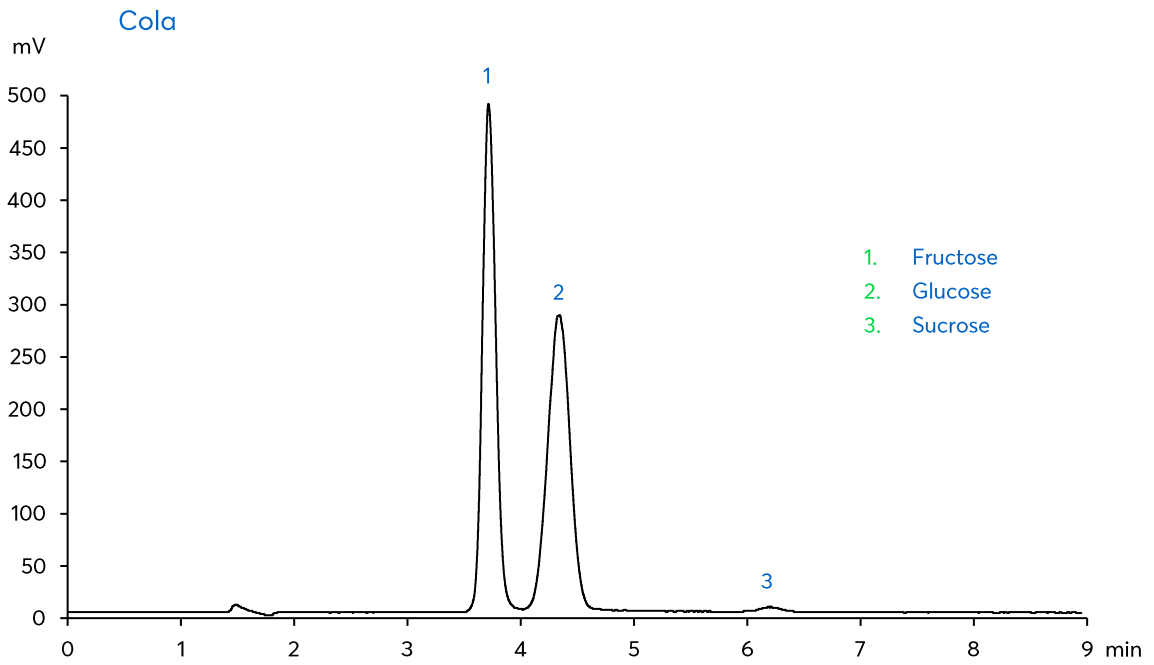


Application note #7740

Isocratic HPLC Analysis of Four Sugars with ELSD Detection

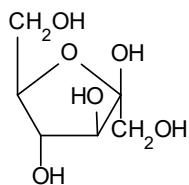




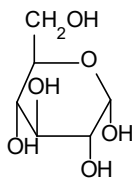
Method Details

CONDITIONS

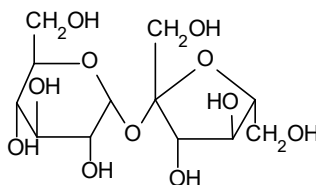
Column:	Avantor® ACE® Excel® 3 HILIC-B
Particle Size:	3 µm
Dimensions:	150 x 4.6 mm
Instrument:	VWR Hitachi Chromaster HPLC system with VWR ELSD 90
Mobile Phase:	MeCN/H ₂ O (77:23 v/v)
Flow Rate:	1.3 mL/min
Injection:	10 µL
Temperature:	30 °C
Detection:	ELSD set to 50 °C
Samples:	Drink samples diluted 1 to 4 with H ₂ O



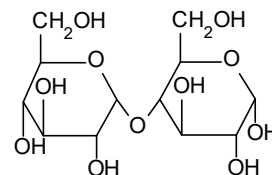
Fructose



Glucose



Sucrose



Maltose

ORDERING TABLE

Product	Details	Size	Part Number
Avantor® ACE® Excel® 3 HILIC-B	HPLC Column	150 x 4.6 mm	HILB-3-1546U
Acetonitrile	VWR HiPerSolv CHROMANORM® for LC-MS	1 L	83640.290
Water	VWR CHROMANORM® super gradient grade	2.5 L	83650.320
VWR Hitachi Chromaster HPLC	600 bar HPLC system. Includes 5430 DAD		903-0355
VWR ELSD 90	Low temperature ELSD		903-0271