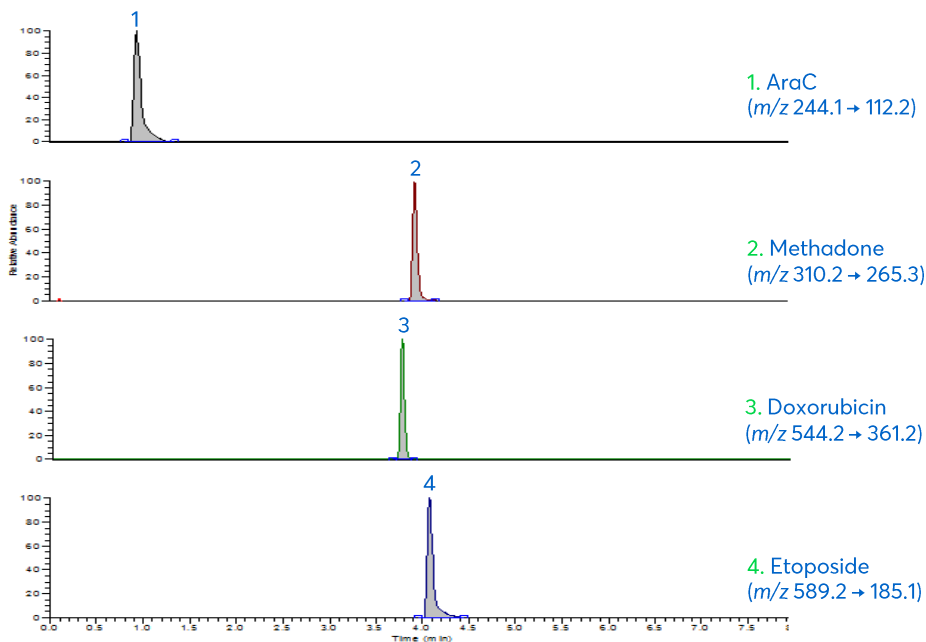


Cytotoxic Agents by UHPLC-MS/MS



Method Details

CONDITIONS

Column: Avantor® ACE® UltraCore 2.5 SuperC18

Particle Size: 2.5 µm

Dimensions: 100 x 2.1 mm

Mobile Phase: A: 0.1% formic acid in H₂O
B: 0.1% formic acid in MeCN

Gradient:

Time (mins)	% B
0.0	2
1.0	2
3.0	80
5.0	80
5.1	2
8.0	2

Flow Rate: 0.25 mL/min

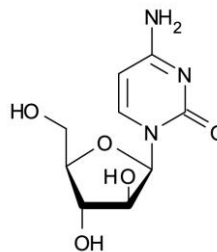
Detection: Thermo Vantage triple quadrupole MS

MRM +ve ESI mode

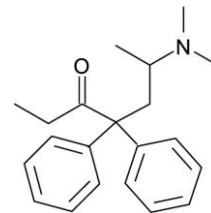
Spray voltage: 3500 V

Nitrogen sheath and auxiliary gas

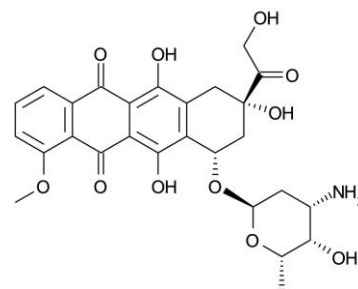
CID with argon: 1.5 mTorr



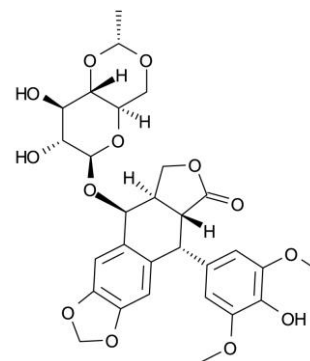
AraC



Methadone



Doxorubicin



Etoposide

ORDERING TABLE

Product	Details	Size	Part Number
Avantor® ACE® UltraCore 2.5 SuperC18	HPLC Column	100 x 2.1 mm	CORE-25A-1002U

Reproduced with permission of Barts Cancer Institute, Queen Mary University of London.